



## An Agile & Reliable LNG Bunkering Vessel

SHERPAZ 5000 is a compact and agile LNG bunkering vessel designed to store and deliver LNG - as fuel - in ports and restrained areas to all kind of LNG powered ships.

SHERPAZ LINE offers a range of small size LNG carrier vessels with optimized cryogenic containment from 3000m<sup>3</sup> to 7500m<sup>3</sup>.

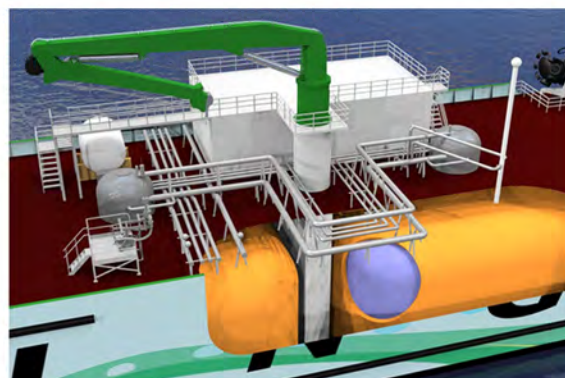
This innovative design integrates a smart and efficient BOG management system, which simplifies bunkering operations and maintenance.

SHERPAZ LNG pure gas propulsion makes its an environmentally friendly LNG bunkering vessel.

### GREEN TRANSITION FOR THE MARITIME INDUSTRY

For compliance with :

- ✓ MARPOL next emission rules
- ✓ Ready for any European flags
- ✓ Pure-Gas propulsion 0%SO<sub>x</sub>
- ✓ Operations in SECA areas



### ABOUT US

SOFRESID Engineering is a French multidisciplinary Team gathering 30 years of expertise in the Naval Industry.

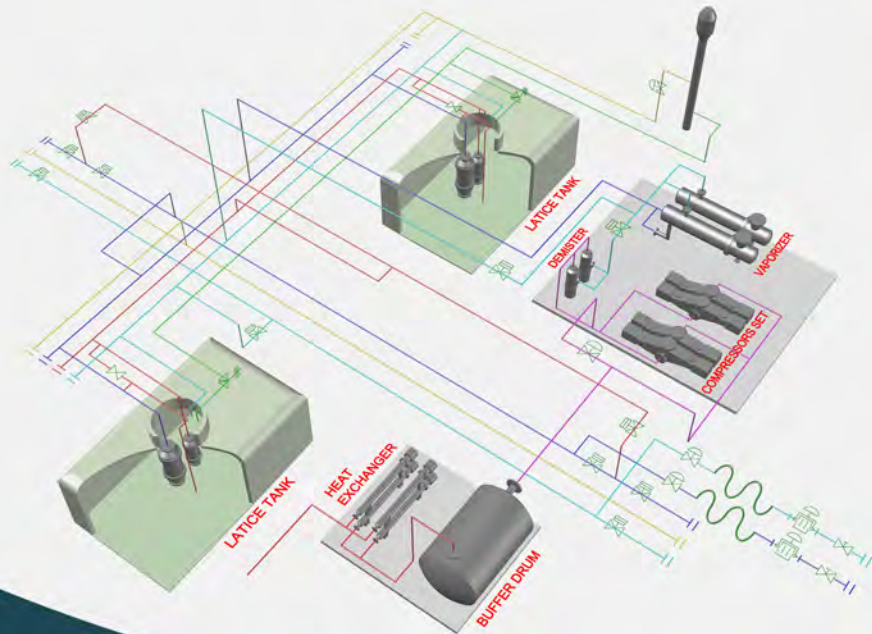
@ [www.sofresid-engineering.com](http://www.sofresid-engineering.com)

✉ [contact.pontchateau@sofresid.com](mailto:contact.pontchateau@sofresid.com)

☎ +33 (0)2 40 45 32 00

# SAFE AND RELIABLE BUNKERING OPERATIONS

- **SAFE SHIP to SHIP transfer** : the safest procedure to handle cargo according the gas industry recommendation, vessel immobilization and tank capacities
- **SMART LNG CARGO HANDLING block** : upper, compact and modular arrangement, driven by a -design to cost process, with a single transfer system and simplified BOG management
- **INNOVATIVE Type C prismatic LNG cryo containment technology**



## A AGILE VESSEL

**SHERPAZ 5000** is 90m length with 5000m<sup>3</sup> storage, limited draft & breadth, high manoeuvrability (DP ready design)

Several fit to purpose propulsion packs solutions (Long range to restrained areas).



Agility and fit for purpose propulsion



Cargo handling performance and reliability



Modular cryogenic tanks solutions



NAVAL / ENERGY / UPSTREAM / BUILDINGS & INFRASTRUCTURES / DOWNSTREAM O&G - CHEMICALS / OTHER INDUSTRIES



Paris (Head office)

Brest, Lorient, Nantes-Pontchâteau, Cherbourg, Dunkerque, Le Havre, Pau, Aix-en-provence, Lyon